



August 13, 2021

Submitted via email to: [CaliforniaNature@resources.ca.gov](mailto:CaliforniaNature@resources.ca.gov)

Secretary Wade Crowfoot  
California Natural Resources Agency  
1416 Ninth Street, Suite 1311  
Sacramento, CA 95814

RE: 30x30 Campaign Acquisition Opportunities in and around Orange County, CA

Dear Secretary Crowfoot:

The 31 undersigned organizations and community groups are part of the Orange County Green Vision Coalition formed and coordinated by the regional non-profit Friends of Harbors, Beaches and Parks (FHBP). Together we have established a united voice for parks and conservation in the region. We collectively write to you as the California Natural Resources Agency (CNRA) develops the plans for conservation activities as directed by the Governor's Executive Order N-82-20. This Executive Order proposes to protect 30% of California's lands and coastal waters by the year 2030.

Orange County, with its 3.1 million residents, may be one of the most densely populated counties in the state, but it is also home to important landscapes and habitats, threatened and endangered species, wildlife corridors, economically disadvantaged and socially vulnerable communities, and plenty of opportunities for continued conservation and restoration. Orange County is also home to the State's first Natural Community Conservation Plan (from 1992), which offset the impacts from infrastructure and development projects through the permanent preservation of tens of thousands of acres. Conservation is a bedrock value in Orange County. This letter serves as a reminder that even counties considered urban, still have significant potential land acquisition and coastal water protection opportunities.

In 2000, FHBP created a countywide Greenprint, called the Green Vision Map, that documented the wish list of conservation opportunities for Orange County and beyond. This map is updated annually and has already served as the baseline inventory for the Regional Advanced Mitigation Program within the Orange County Transportation Authority's Renewed Measure M Environmental Mitigation Program. Through this and other work, conservation continues—but, the pace is slow. We hope additional investments of funding and partnerships can strengthen the prospects that currently exist and help achieve the 30x30 campaign.

To this end, and in partnership with Hills For Everyone—Founders of Chino Hills State Park—the Green Vision Map was used to document potential acquisition opportunities throughout the region. The map was used to collect information by geography that offers 275 properties totaling over 30,000 acres mainly in Orange County, but also including biologically connected land in Los Angeles, San Bernardino, Riverside, and San Diego Counties. We recognize our habitats and wildlife know no geopolitical boundaries—and we know that adding to the existing reserve system in neighboring counties helps achieve Orange County conservation goals.

The attached maps (See **Attachments 1-19**) diagram 18 geographies with the potential to help meet the 30x30 campaign goals. Each geography was mapped to include privately owned properties that were 15 acres in size or greater<sup>1</sup> that were not protected, remained in their natural state, did not include habitable structures, and may offer the chance for conservation should the landowner be a willing seller. The geographies are as follows:

Area	Map #	# of Properties	Total Acreage
Coastal	1 - 4	29	2,036
Urban	5 - 8	8	2,090
Puente-Chino Hills	8 - 11	61	11,670
Santa Ana River	12 - 13	28	4,058
Foothills	14 - 19	149	10,658
<b>TOTAL:</b>		<b>275</b>	<b>30,512</b>

We've identified some of the benefits of conservation in and around Orange County and their alignment with the 30x30 effort and other important community and climate goals. These include:

- Protecting landscapes with high biological value including threatened and endangered species;<sup>2,3</sup>
- Reducing the risks associated with building homes and adding people in wildfire prone areas by protecting landscapes;<sup>4</sup>
- Proximity to densely populated and economically disadvantaged communities (such as La Habra, Anaheim, Santa Ana, Westminster, and Garden Grove);<sup>5</sup>
- Opportunities to expand the State Marine Protected Areas off the Southern California coast;<sup>6</sup>
- Protecting lands that can serve to meet statewide goals to offset greenhouse gas emissions<sup>7</sup> and vehicle miles traveled,<sup>8</sup> while simultaneously acting as carbon/soil sequestration locations;
- Preserving significant archaeological, cultural, and Indigenous historic sites and artifacts;
- Inclusion of habitat lands where the proposed endangered species listing for the Southern California mountain lion subspecies exists;<sup>9</sup>
- Proximity to socially vulnerable communities (such as Fullerton, Buena Park, Westminster, Santa Ana, Fountain Valley, and Costa Mesa);<sup>10</sup>

1 Two exceptions to this 15-acre minimum are the final acquisitions for the Bolsa Chica Ecological Reserve. Both of which are under 15 acres, but complete the vision for protected lands in this coastal area.

2 South Coast Wildlands Report: California Essential Habitat Connectivity Study (2010) ([www.scwildlands.org/reports/CaliforniaEssentialHabitatConnectivityProject.pdf](http://www.scwildlands.org/reports/CaliforniaEssentialHabitatConnectivityProject.pdf))

3 State Wildlife Action Plan (2015) ([wildlife.ca.gov/SWAP/Final](http://wildlife.ca.gov/SWAP/Final))

4 CalFire Fire Hazard Severity Zone Maps ([osfm.fire.ca.gov/divisions/wildfire-planning-engineering/wildland-hazards-building-codes/fire-hazard-severity-zones-maps/](http://osfm.fire.ca.gov/divisions/wildfire-planning-engineering/wildland-hazards-building-codes/fire-hazard-severity-zones-maps/))

5 Office of Environmental Health Hazard Assessment CalEnviroScreen 3.0 ([oehha.ca.gov/calenviroscreen/report/calenviroscreen-30](http://oehha.ca.gov/calenviroscreen/report/calenviroscreen-30))

6 State Marine Protected Areas Map ([wildlife.ca.gov/Conservation/Marine/MPAs/Network/Southern-California](http://wildlife.ca.gov/Conservation/Marine/MPAs/Network/Southern-California))

7 California Air Resources Board AB 32 2017 Scoping Plan ([ww2.arb.ca.gov/sites/default/files/classic/cc/scopingplan/scoping\\_plan\\_2017.pdf](http://ww2.arb.ca.gov/sites/default/files/classic/cc/scopingplan/scoping_plan_2017.pdf))

8 California Air Resources Board Vehicle Miles Traveled ([ww2.arb.ca.gov/resources/documents/carb-2017-scoping-plan-identified-vmt-reductions-and-relationship-state-climate](http://ww2.arb.ca.gov/resources/documents/carb-2017-scoping-plan-identified-vmt-reductions-and-relationship-state-climate))

9 Fish and Game Commission Notice of Petition to List the SoCal Subspecies of Mountain Lion ([nrm.dfg.ca.gov/FileHandler.ashx?DocumentID=171207&inline](http://nrm.dfg.ca.gov/FileHandler.ashx?DocumentID=171207&inline))

10 Center for Disease Control's Socially Vulnerable Index Map ([svi.cdc.gov/map.html](http://svi.cdc.gov/map.html))

- Adding recreational opportunities close to millions of residents and visitors; and,
- Completing important wildlife connections to link large landscapes together.<sup>11</sup>

Some of the barriers Orange County has faced in terms of conservation include: an historic inequity in statewide distribution of conservation funding and lack of a regionally-focused state-charted conservancy. There is also a bias toward preservation of lands north of Bakersfield. Today, we pledge to the CNRA that if conservation dollars are made available to permanently protect these vitally important landscapes in Orange County, we will be reliable on-the-ground partners to achieve conservation successes. We have not been deterred by the struggles—they only make us more persistent.

In conclusion, as CNRA staff begin to assemble conservation opportunities throughout the state, we hope you will look toward the Green Vision Map and Coalition for collective coordination. Our Green Vision Coordinator, Melanie Schlotterbeck can be reached at [GreenVision@FHBP.org](mailto:GreenVision@FHBP.org) or at (714) 501-3133.

Sincerely,

Michael Wellborn  
President  
Friends of Harbors, Beaches and Parks

Claire Schlotterbeck  
Executive Director  
Hills For Everyone

Dan Silver, M.D.  
Executive Director  
Endangered Habitats League

Elizabeth Lambe  
Executive Director  
Los Cerritos Wetlands Land Trust

Kim Kolpin  
Executive Director  
Bolsa Chica Land Trust

Hallie Jones  
Executive Director  
Laguna Canyon Foundation

Rich Gomez & Gloria Sefton  
Co-Founders  
Saddleback Canyons Conservancy

Joel Robinson  
Director & Naturalist  
Naturalist For You

John Villa  
Executive Director  
Huntington Beach Wetlands Conservancy

Angela Chen Lindstrom  
President  
Friends of Coyote Hills

Paolo Perrone  
Project Manager  
The Trust for Public Land

Larry Klementowski  
President  
Chino Hills State Park Interpretive Association

Nancy Gardner  
President  
Orange Coast River Park

Denise Erkeneff  
President  
Orange County League of Conservation Voters

<sup>11</sup> South Coast Missing Linkages: A Wildland Network for the South Coast Ecoregion (2008) ([www.scwildlands.org/reports/SCMLRegionalReport.pdf](http://www.scwildlands.org/reports/SCMLRegionalReport.pdf))

Ray Chandos  
Secretary-Treasurer  
Rural Canyons Conservation Fund

Pat Martz, Ph.D.  
President  
California Cultural Resource Preservation Alliance

Terry Welsh, M.D.  
President  
Banning Ranch Conservancy

Gillian Martin  
Director  
Cavity Conservation Initiative

Susan Sheakley  
Conservation Chair  
Sea and Sage Audubon Society

Norm Grossman  
President  
Laguna Greenbelt, Inc.

Brad Jenkins  
President  
California Native Plant Society - Orange  
County Chapter

Reverend Susan Chamberlain  
President  
Orange County Interfaith Coalition for the  
Environment

Charles Falzon  
President  
Amigos de Bolsa Chica

Jack Eidt  
Planner  
Wild Heritage Planner

Gayle Waite  
President  
Laguna Canyon Conservancy

Geoff Sarkissian  
President  
Inter-Canyon League

Rick Halsey  
Director & Founder  
California Chaparral Institute

Ed Amador  
President  
Canyon Lands Conservation Fund

Damon Nagami  
Staff Attorney  
Natural Resources Defense Council

Flor Barajas-Tena  
Member  
Rise Up Willowick Coalition

Charles Klobe  
President  
Stop Polluting Our Newport

Attachments: Overview Map  
Geography Specific Maps (1-18)

Note: Combined higher resolution versions can be found at: [www.FHBP.org/Resources/30x30-campaign](http://www.FHBP.org/Resources/30x30-campaign)



# 30x30 Acquisition Opportunities

Governor Newsom's Executive Order N-82-20 sets a goal for the State to protect 30% of California's lands and coastal waters by the year 2030. It is commonly known as the "30x30" (30 by 30) campaign. With more than 80 conservation and community groups supporting the Friends of Harbors, Beaches, and Parks (FHBP) Green Vision Map, opportunities exist already for preservation. In partnership with Hills For Everyone, the Green Vision Map has been segmented and lists property by property opportunities for acquisition. The 30x30 campaign would only purchase land from willing sellers. Parcels included are a minimum of 15 acres\* and are shown within 18 different geographies on the existing Green Vision Map. We want the State of California to know we are organized and ready for conservation funding with 275 properties totalling more than 30,000 acres.

## OVERALL MAP LEGEND

### COASTAL

- 1 - North (252 acres)
- 2 - Central (461 acres)
- 3 - Southern Central (444 acres)
- 4 - South (879 acres)

### SANTA ANA RIVER

- 11 - Canyon (3,253 acres)
- 12 - River (805 acres)

### FOOTHILLS

- 13 - North (2,623 acres)
- 14 - North Central (1,597 acres)
- 15 - Central (1,463 acres)
- 16 - East (2,492 acres)
- 17 - Southeast (275 acres)
- 18 - South (2,208 acres)

### URBAN

- 5 - North (510 acres)
- 6 - Santiago Creek (228 acres)
- 7 - Central (1,352 acres)

### PUENTE-CHINO HILLS

- 8 - West (749 acres)
- 9 - Central (7,100 acres)
- 10 - East (3,821 acres)

## MAP TOTALS

**275 Properties**  
**30,512 Acres**

## LEGEND

### Acquisition Opportunities

- Active Conservation Project
- Potential Conservation Land

### Other Land Designations

- Public Conservation Land
- Private Conservation Land
- Public Not Protected
- Easement / H.O.A. Land
- Golf Course / Cemetery
- Landfill
- Military Land
- Utility Land
- Stream Corridor
- Highway
- County Boundary



0 2 4 8 12 16 Miles

Projection: Lambert Conformal Conic  
Datum: North American 1983  
Date Prepared: July 2021

\*Two exceptions to this 15-acre minimum are the final acquisitions for the Bolsa Chica Ecological Reserve. Both of which are under 15 acres, but complete the vision for protected lands in this coastal area.



in partnership with

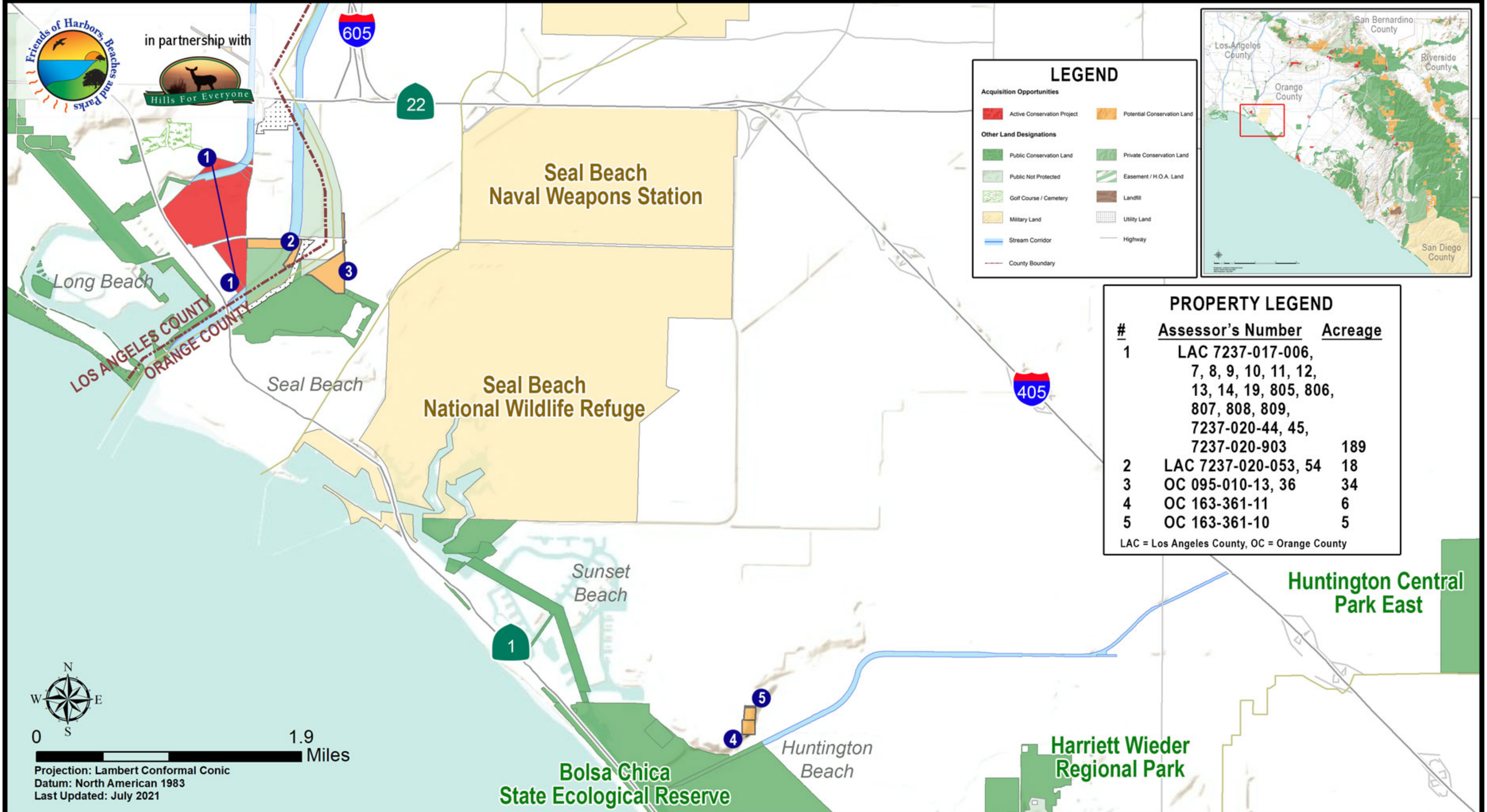




# ORANGE COUNTY Green Vision Map

## Coastal (North)

Map 1 of 18

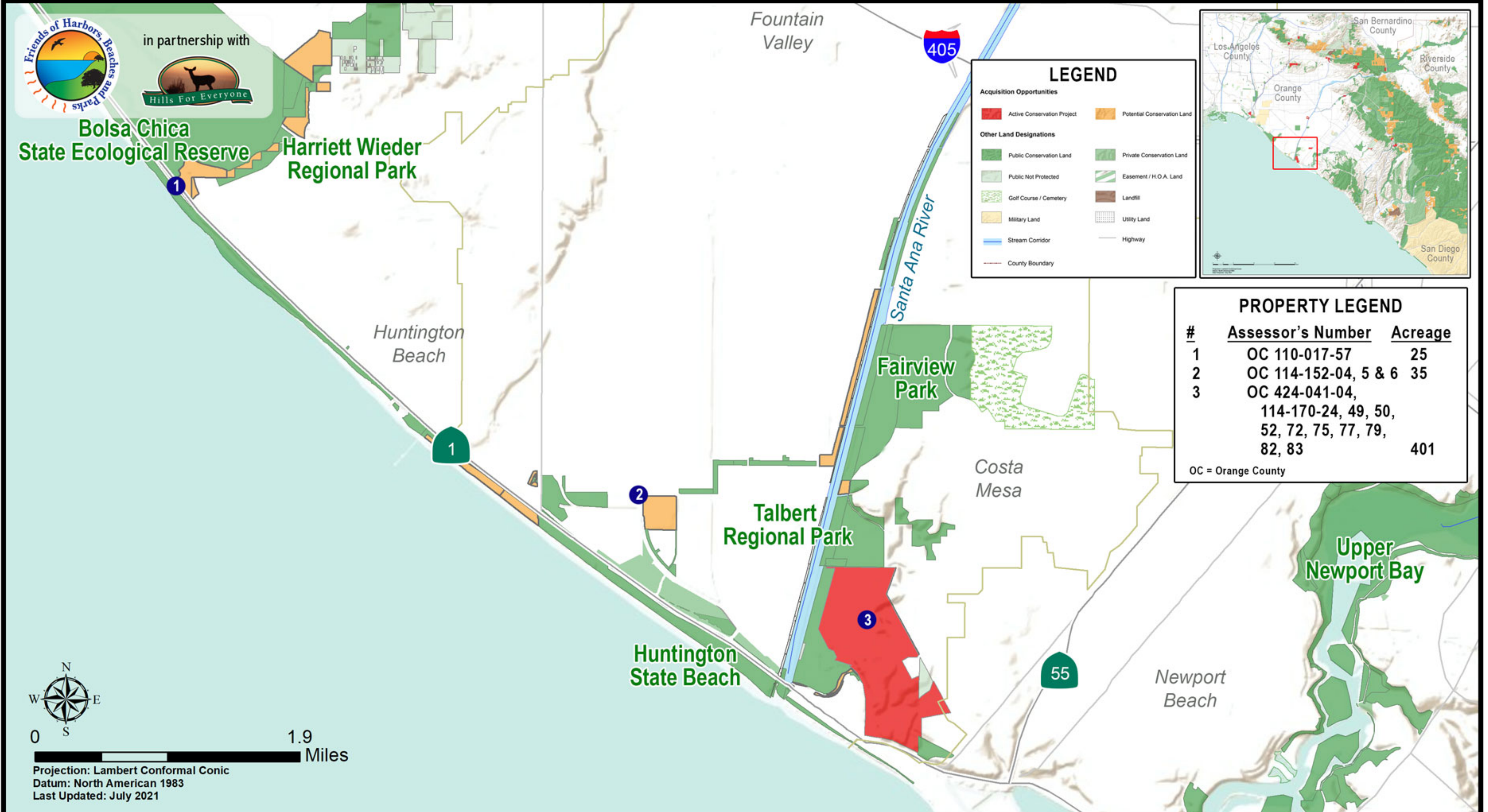




# ORANGE COUNTY Green Vision Map

## Coastal (Central)

Map 2 of 18

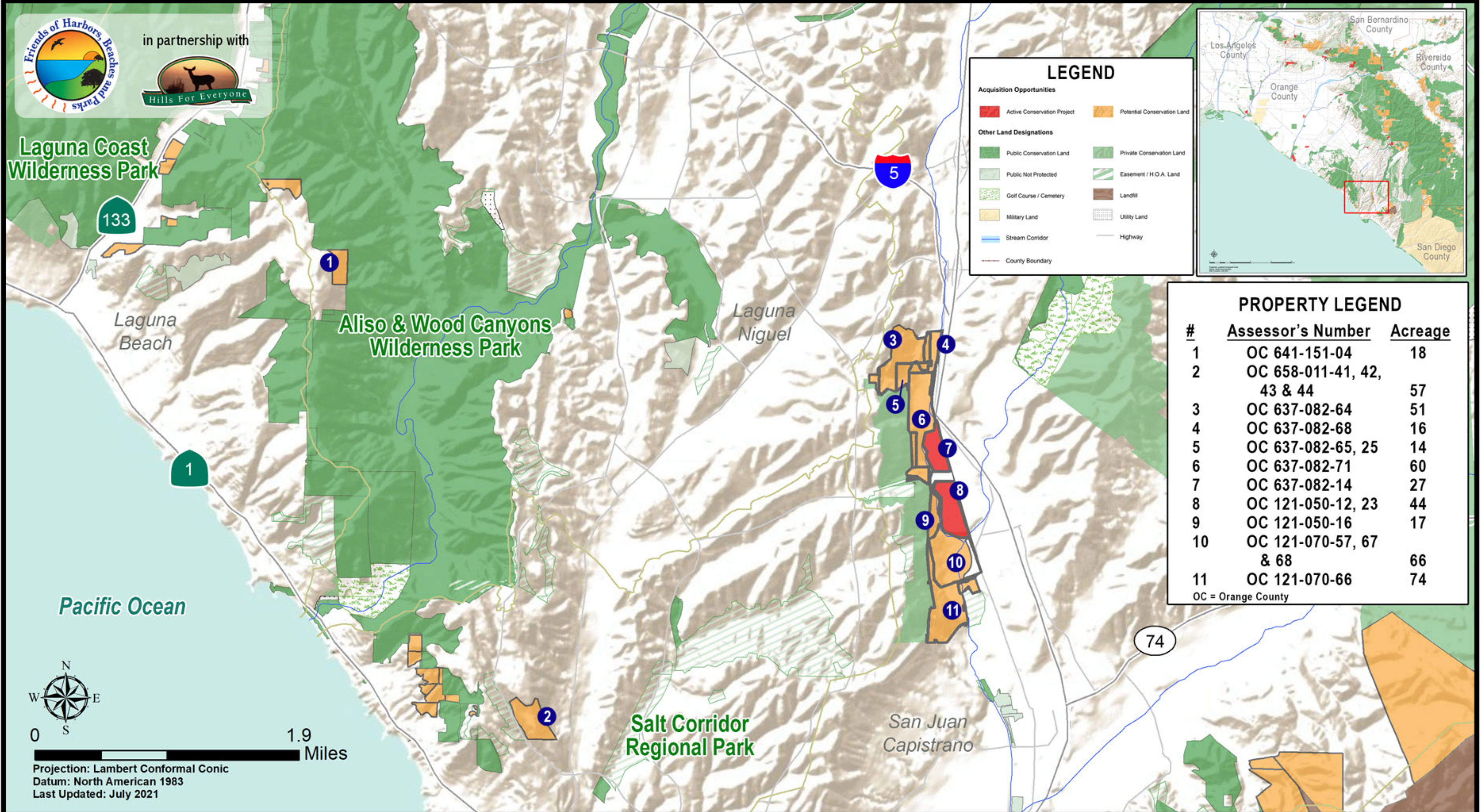




# ORANGE COUNTY Green Vision Map

## Coastal (Southern Central)

Map 3 of 18

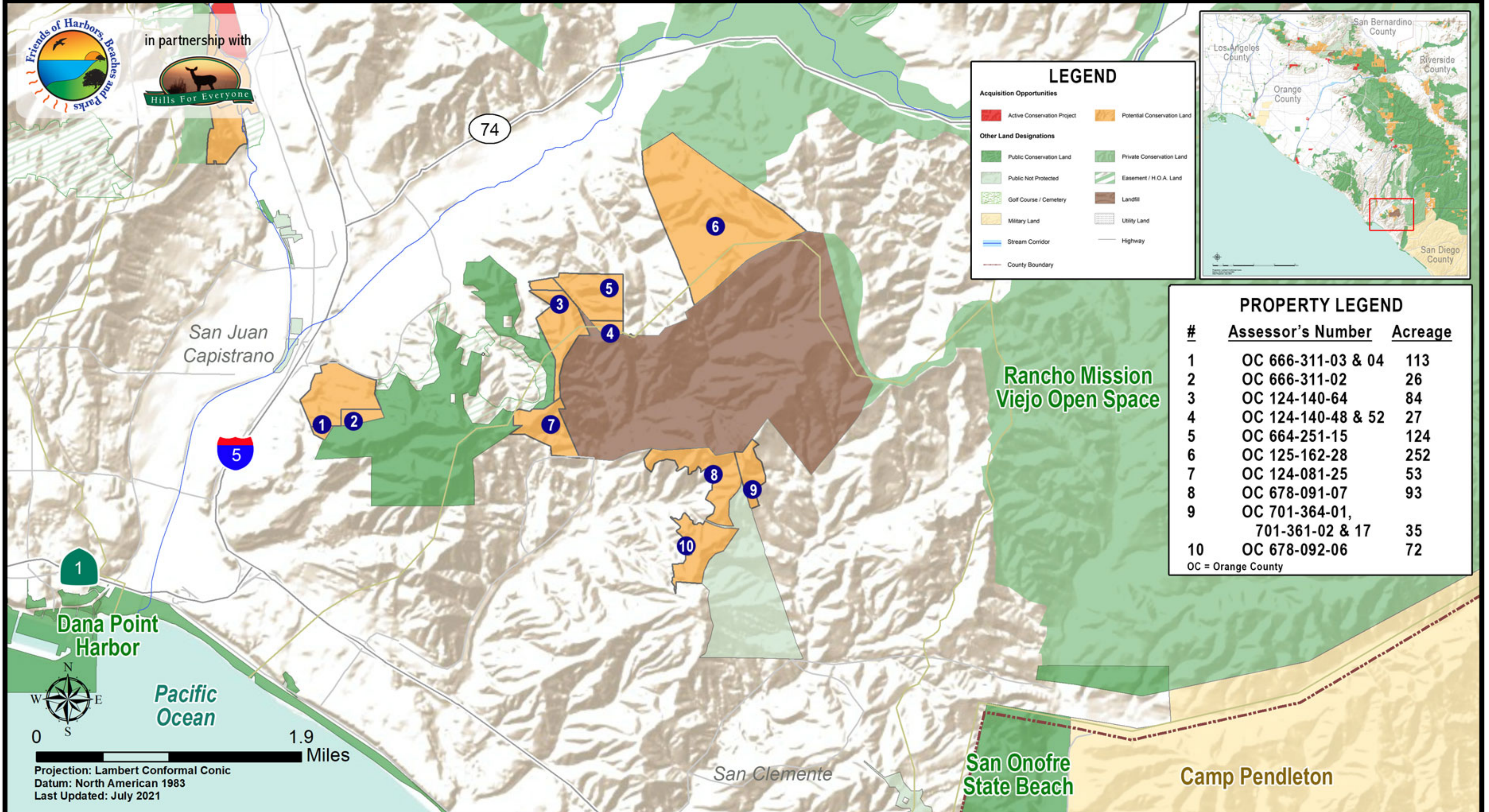




# ORANGE COUNTY Green Vision Map

## Coastal (South)

Map 4 of 18

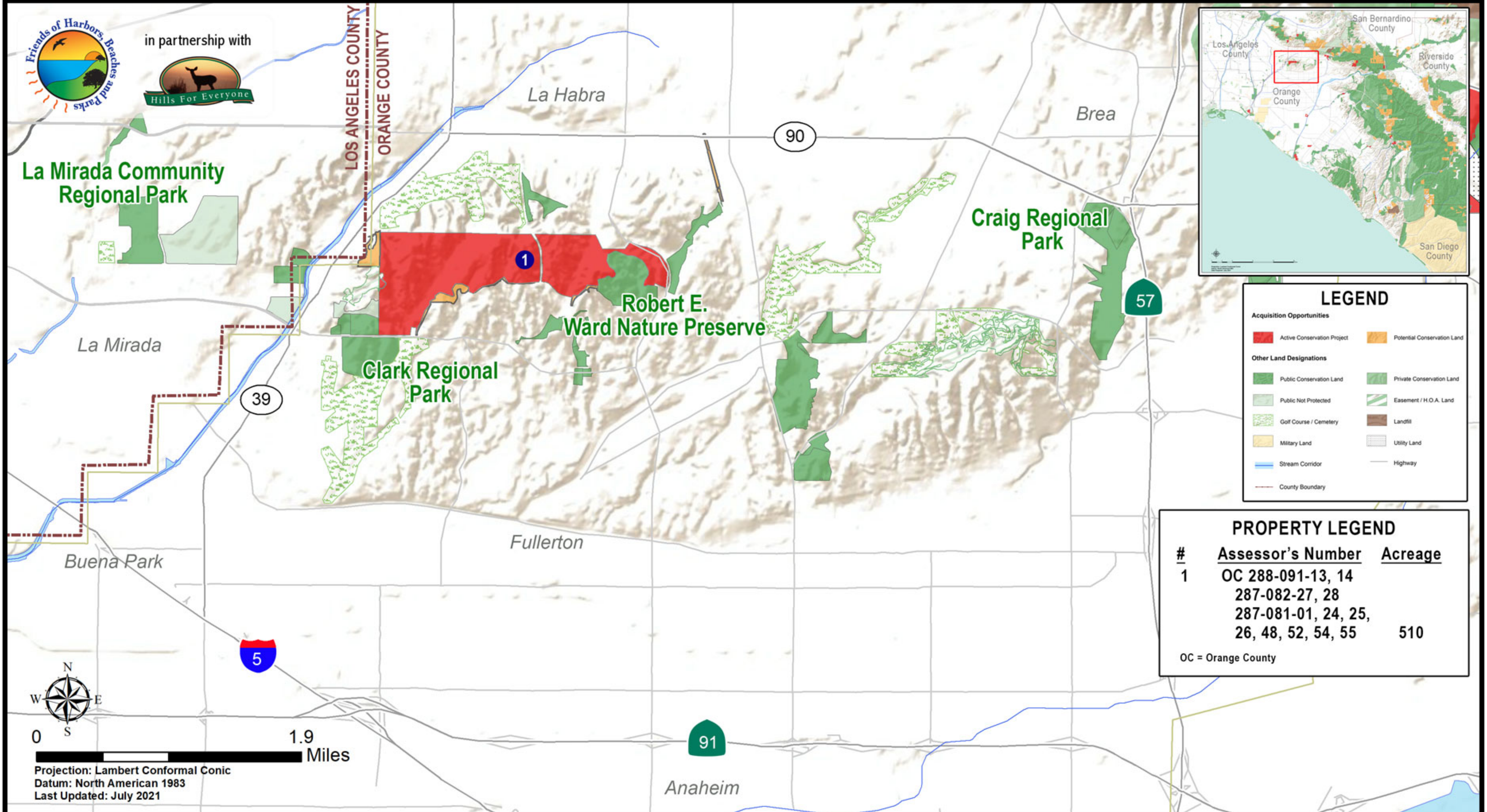




# ORANGE COUNTY Green Vision Map

## Urban (North)

Map 5 of 18

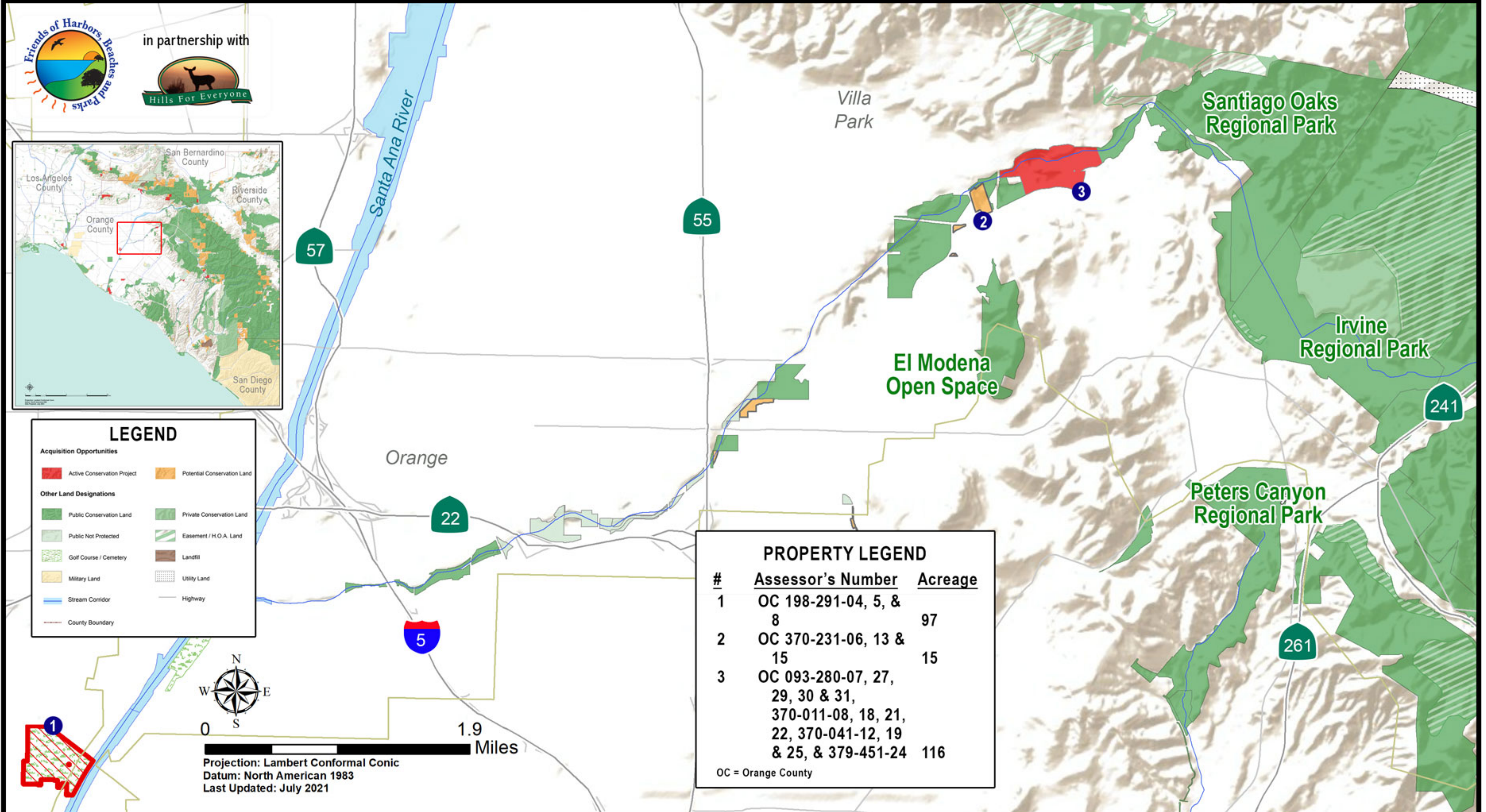




# ORANGE COUNTY Green Vision Map

## Urban (Santiago Creek)

Map 6 of 18





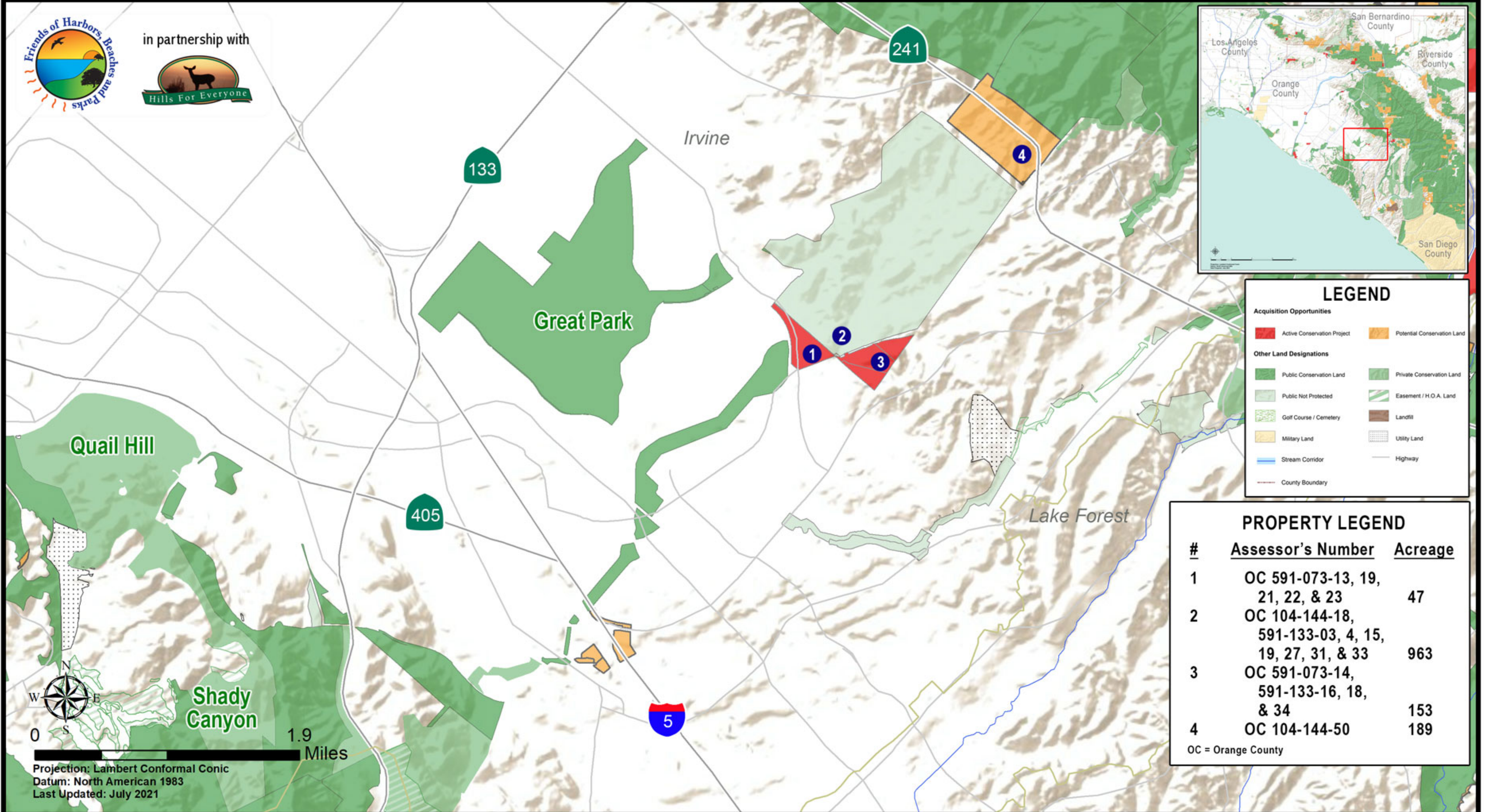
# ORANGE COUNTY Green Vision Map

## Urban (Central)

Map 7 of 18



in partnership with



### LEGEND

Acquisition Opportunities	
<span style="color: red;">■</span>	Active Conservation Project
<span style="color: orange;">■</span>	Potential Conservation Land
Other Land Designations	
<span style="color: green;">■</span>	Public Conservation Land
<span style="color: lightgreen;">■</span>	Public Not Protected
<span style="color: yellow;">■</span>	Golf Course / Cemetery
<span style="color: brown;">■</span>	Military Land
<span style="color: blue;">■</span>	Stream Corridor
<span style="color: red;">■</span>	County Boundary
<span style="color: green;">■</span>	Private Conservation Land
<span style="color: lightgreen;">■</span>	Easement / H.O.A. Land
<span style="color: brown;">■</span>	Landfill
<span style="color: grey;">■</span>	Utility Land
<span style="color: black;">—</span>	Highway

### PROPERTY LEGEND

#	Assessor's Number	Acreage
1	OC 591-073-13, 19, 21, 22, & 23	47
2	OC 104-144-18, 591-133-03, 4, 15, 19, 27, 31, & 33	963
3	OC 591-073-14, 591-133-16, 18, & 34	153
4	OC 104-144-50	189

OC = Orange County

Projection: Lambert Conformal Conic  
Datum: North American 1983  
Last Updated: July 2021



# ORANGE COUNTY Green Vision Map

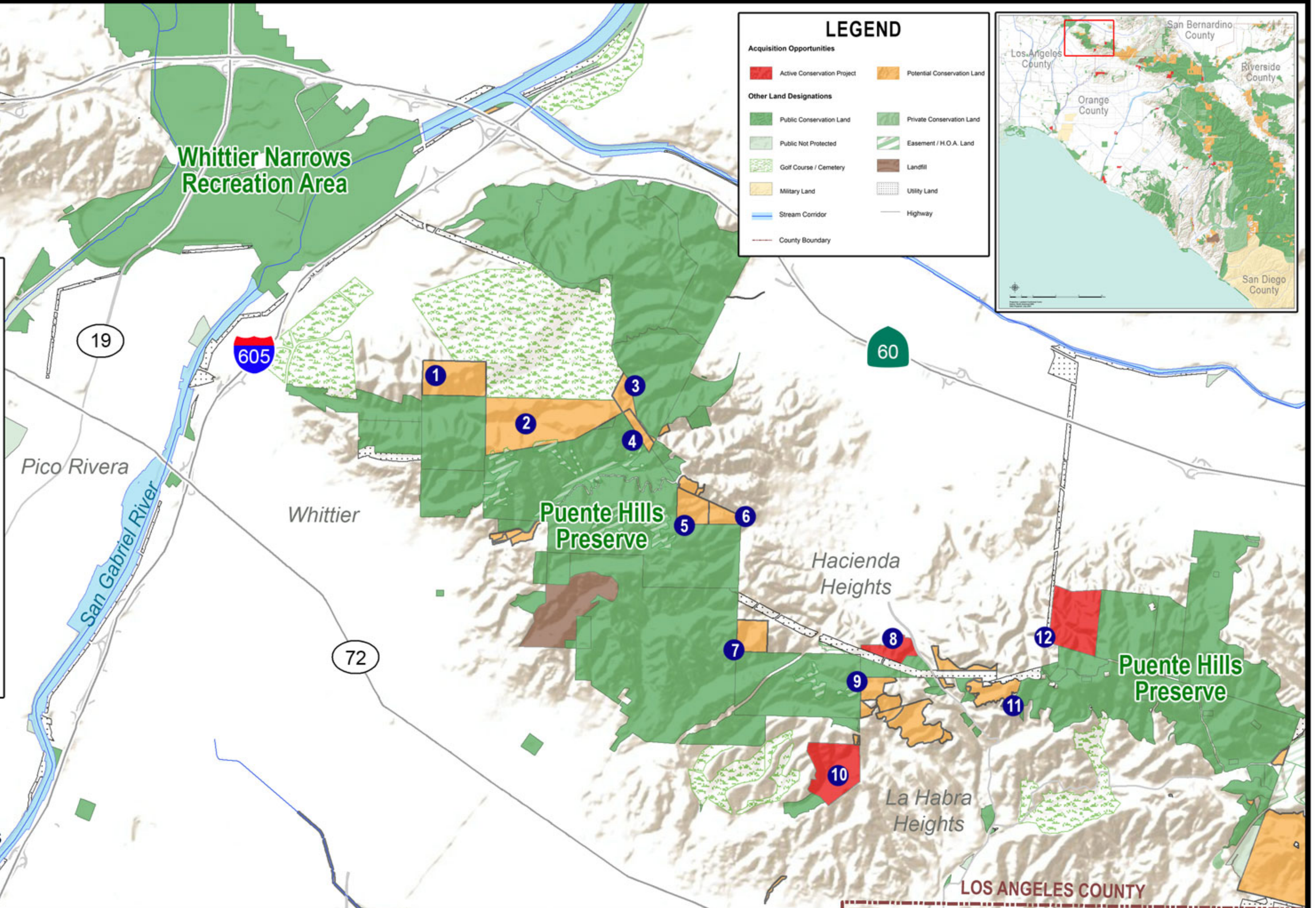
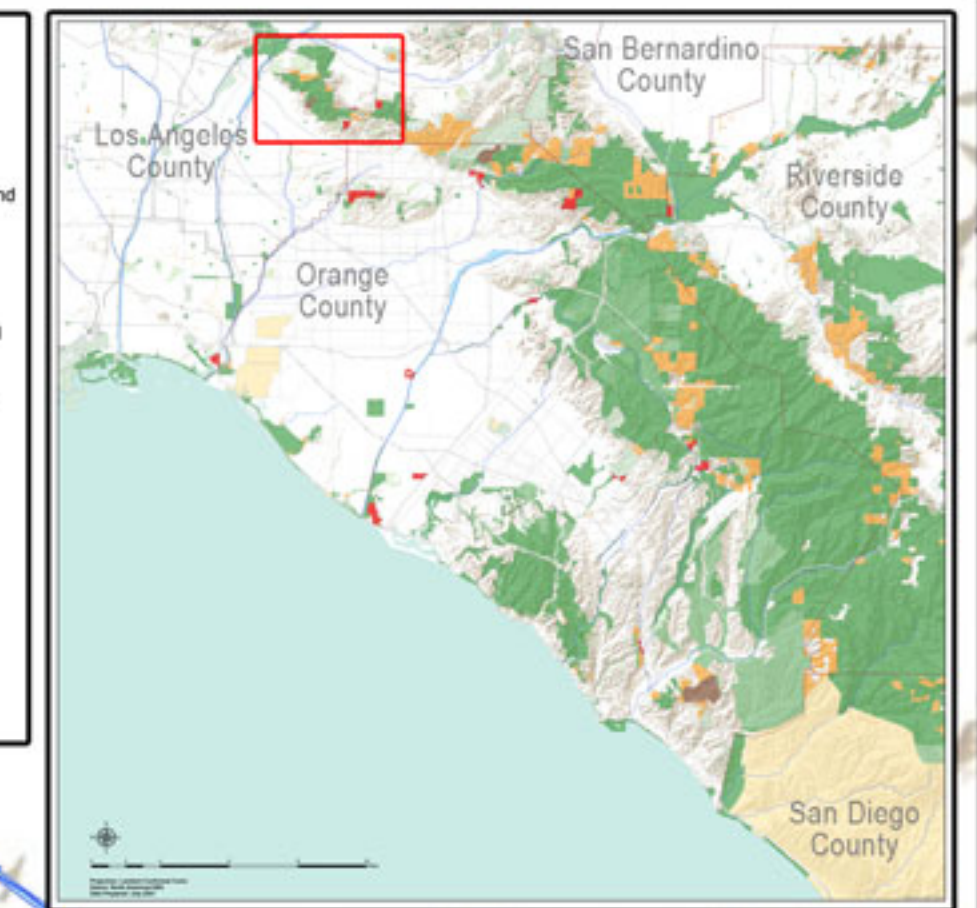
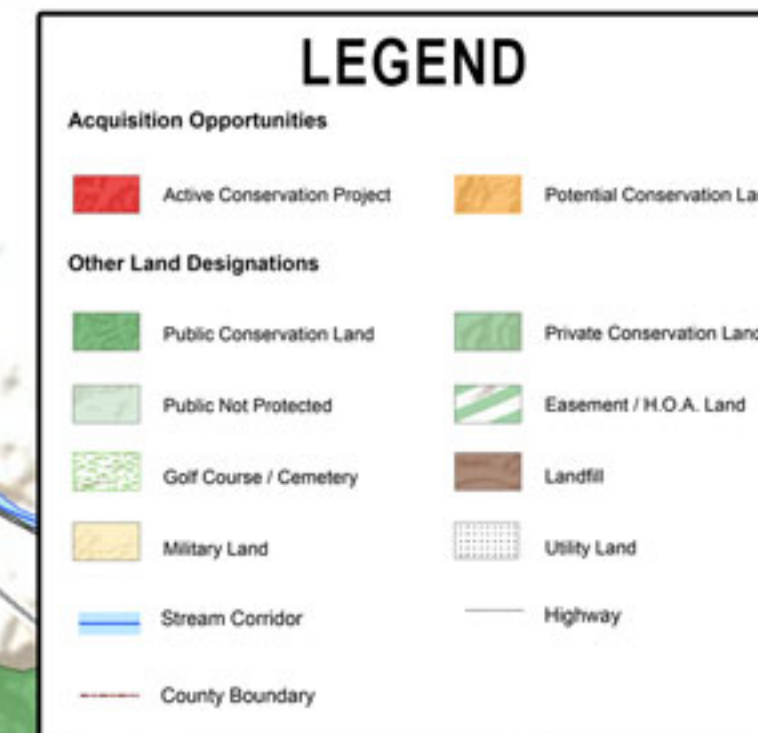
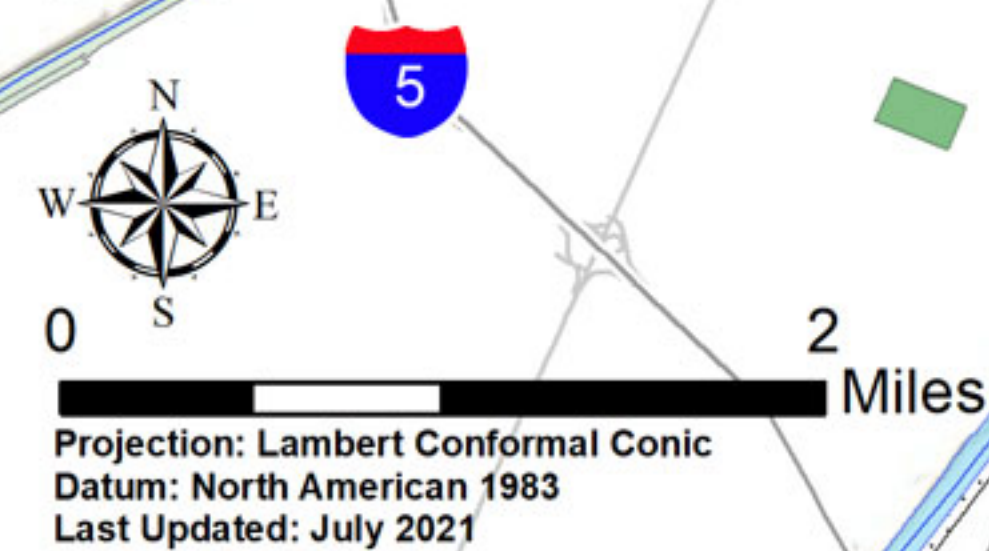
## Puente-Chino Hills (West)

Map 8 of 18



PROPERTY LEGEND		
#	Assessor's Number	Acreage
1	LAC 8125-025-008	80
2	LAC 8125-025-009	233
3	LAC 8125-025-909	26
4	LAC 8125-025-918	15
5	LAC 8289-007-009	37
6	LAC 8289-007-002	20
7	LAC 8289-019-006	39
8	LAC 8240-036-021	
	8291-035-020 & 21	29
9	LAC 8240-002-001	22
10	LAC 8291-004-800	
	8291-031-800	
	8291-023-800	100
11	LAC 8239-031-005	
	& 6, 8239-045-017	36
12	LAC 8294-030-001	112

LAC - Los Angeles County

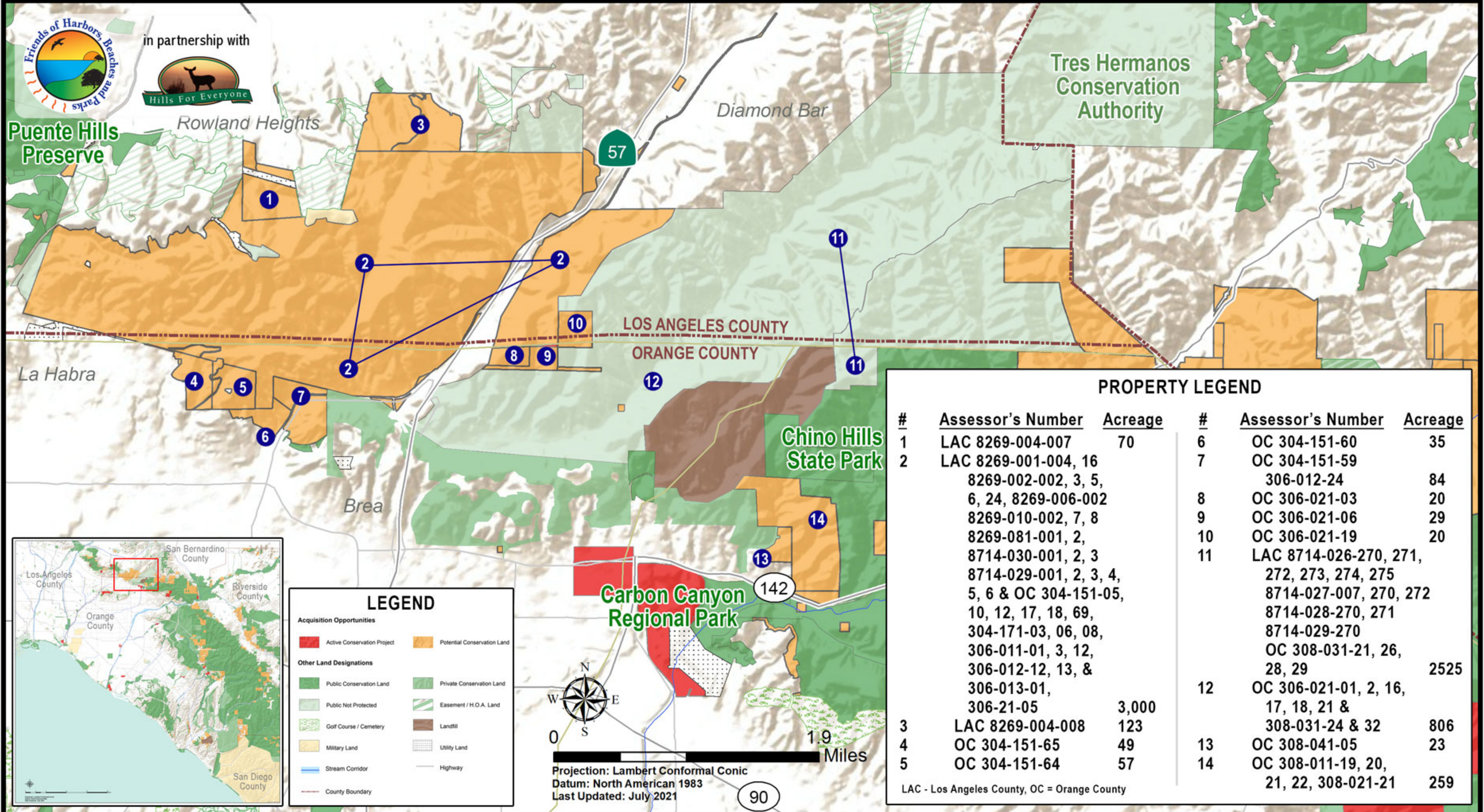




# ORANGE COUNTY Green Vision Map

## Puente-Chino Hills (Central)

Map 9 of 18

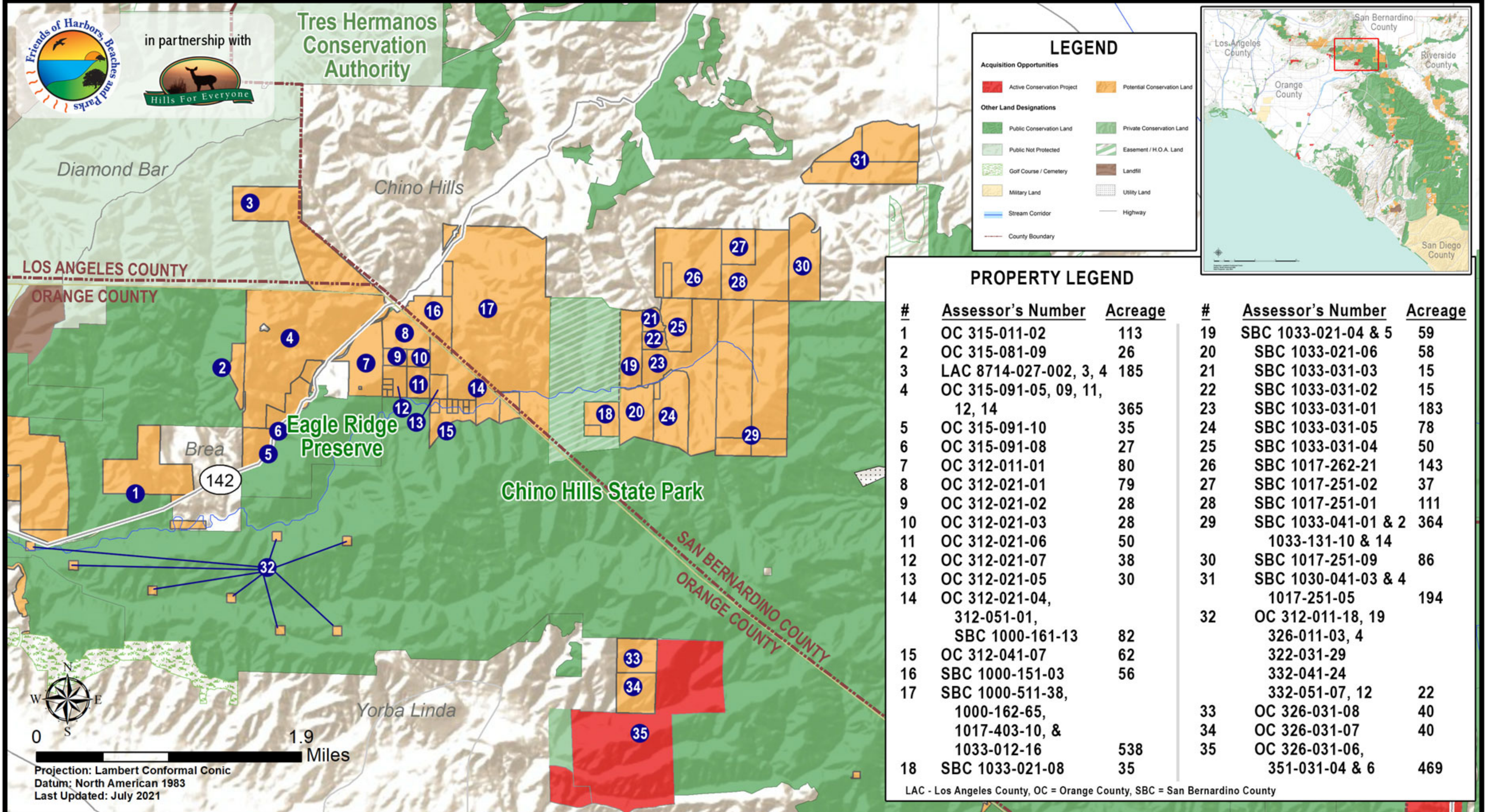




# ORANGE COUNTY Green Vision Map

## Puente-Chino Hills (East)

Map 10 of 18





# ORANGE COUNTY Green Vision Map

## Santa Ana River (Canyon)

Map 11 of 18

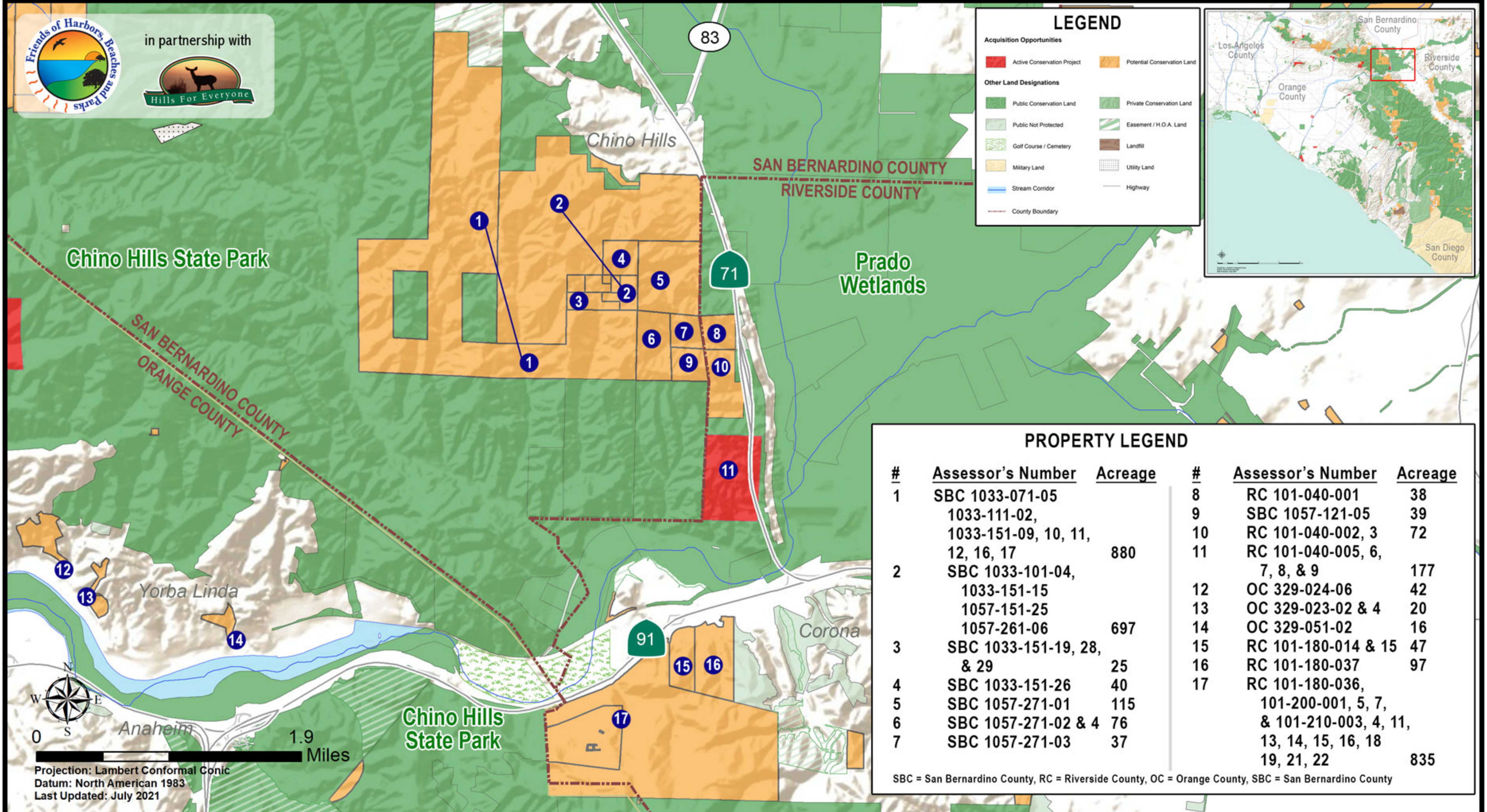
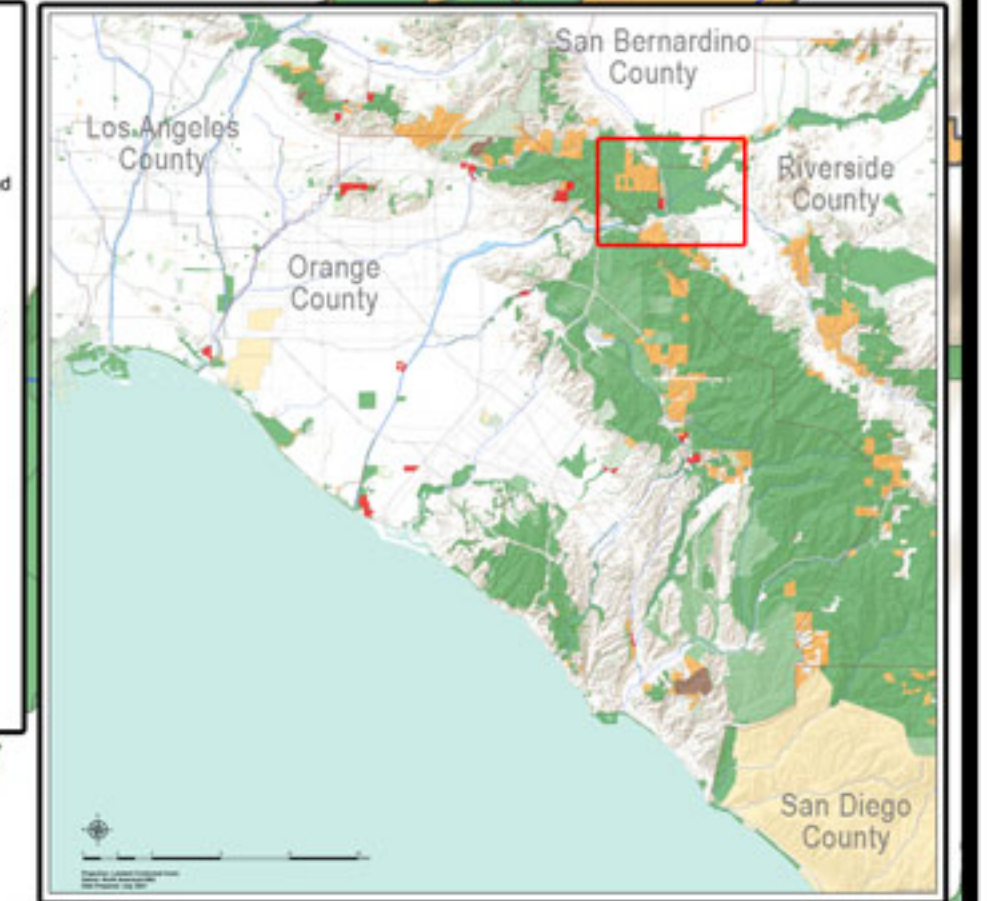


in partnership with



### LEGEND

<b>Acquisition Opportunities</b>	
<span style="color: red;">■</span> Active Conservation Project	<span style="color: orange;">■</span> Potential Conservation Land
<b>Other Land Designations</b>	
<span style="color: green;">■</span> Public Conservation Land	<span style="color: green;">■</span> Private Conservation Land
<span style="color: lightgreen;">■</span> Public Not Protected	<span style="color: green;">■</span> Easement / H.O.A. Land
<span style="color: yellow;">■</span> Golf Course / Cemetery	<span style="color: brown;">■</span> Landfill
<span style="color: yellow;">■</span> Military Land	<span style="color: gray;">■</span> Utility Land
<span style="color: blue;">—</span> Stream Corridor	<span style="color: gray;">—</span> Highway
<span style="color: red;">—</span> County Boundary	



### PROPERTY LEGEND

#	Assessor's Number	Acreage	#	Assessor's Number	Acreage
1	SBC 1033-071-05		8	RC 101-040-001	38
	1033-111-02,		9	SBC 1057-121-05	39
	1033-151-09, 10, 11,		10	RC 101-040-002, 3	72
	12, 16, 17	880	11	RC 101-040-005, 6,	
2	SBC 1033-101-04,			7, 8, & 9	177
	1033-151-15		12	OC 329-024-06	42
	1057-151-25		13	OC 329-023-02 & 4	20
	1057-261-06	697	14	OC 329-051-02	16
3	SBC 1033-151-19, 28,		15	RC 101-180-014 & 15	47
	& 29	25	16	RC 101-180-037	97
4	SBC 1033-151-26	40	17	RC 101-180-036,	
5	SBC 1057-271-01	115		101-200-001, 5, 7,	
6	SBC 1057-271-02 & 4	76		& 101-210-003, 4, 11,	
7	SBC 1057-271-03	37		13, 14, 15, 16, 18	
				19, 21, 22	835

SBC = San Bernardino County, RC = Riverside County, OC = Orange County, SBC = San Bernardino County



Projection: Lambert Conformal Conic  
Datum: North American 1983  
Last Updated: July 2021

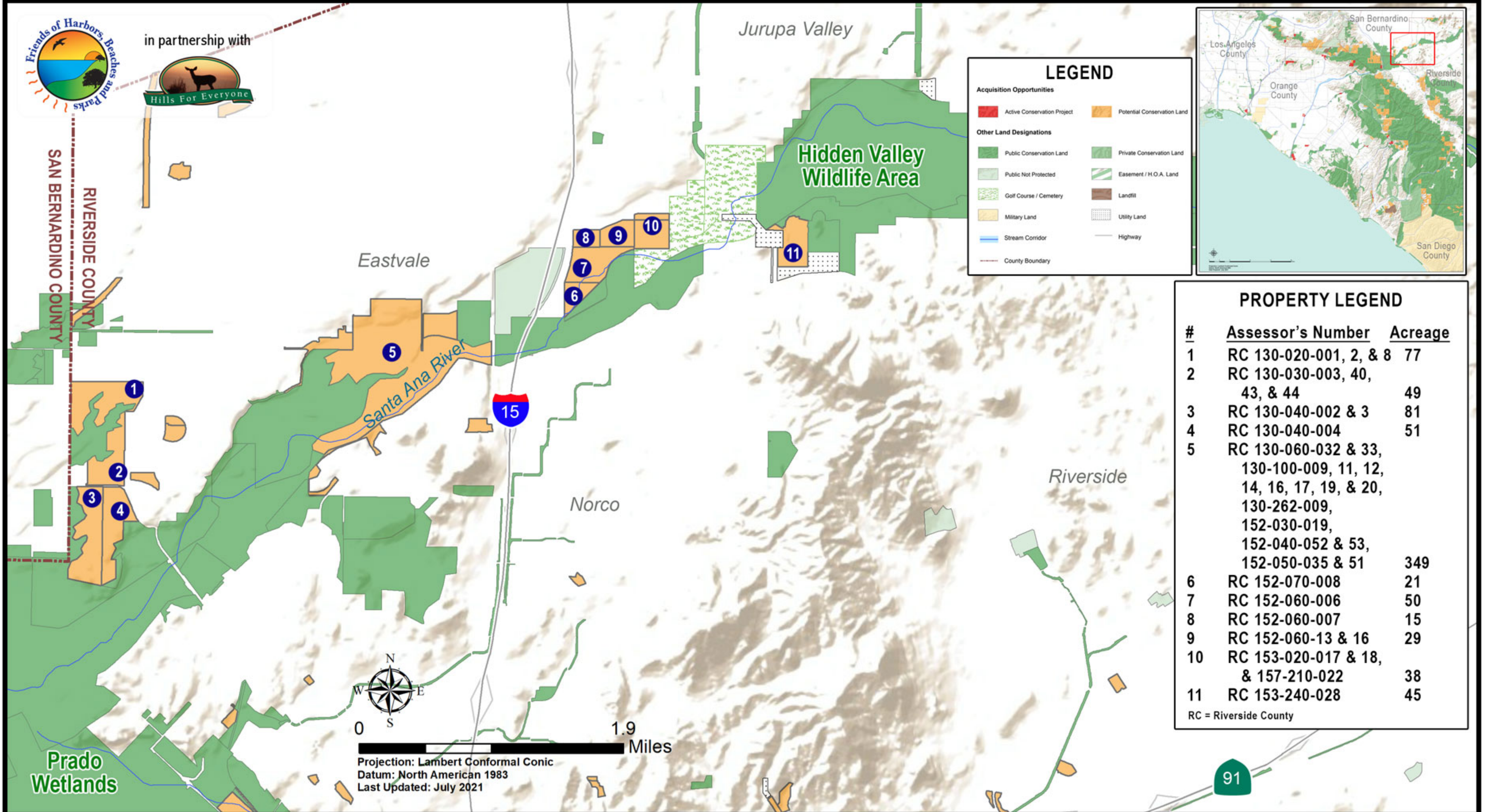
1.9 Miles



# ORANGE COUNTY Green Vision Map

## Santa Ana River (Corridor)

Map 12 of 18





# ORANGE COUNTY Green Vision Map

## Foothills (North)

Map 13 of 18



in partnership with



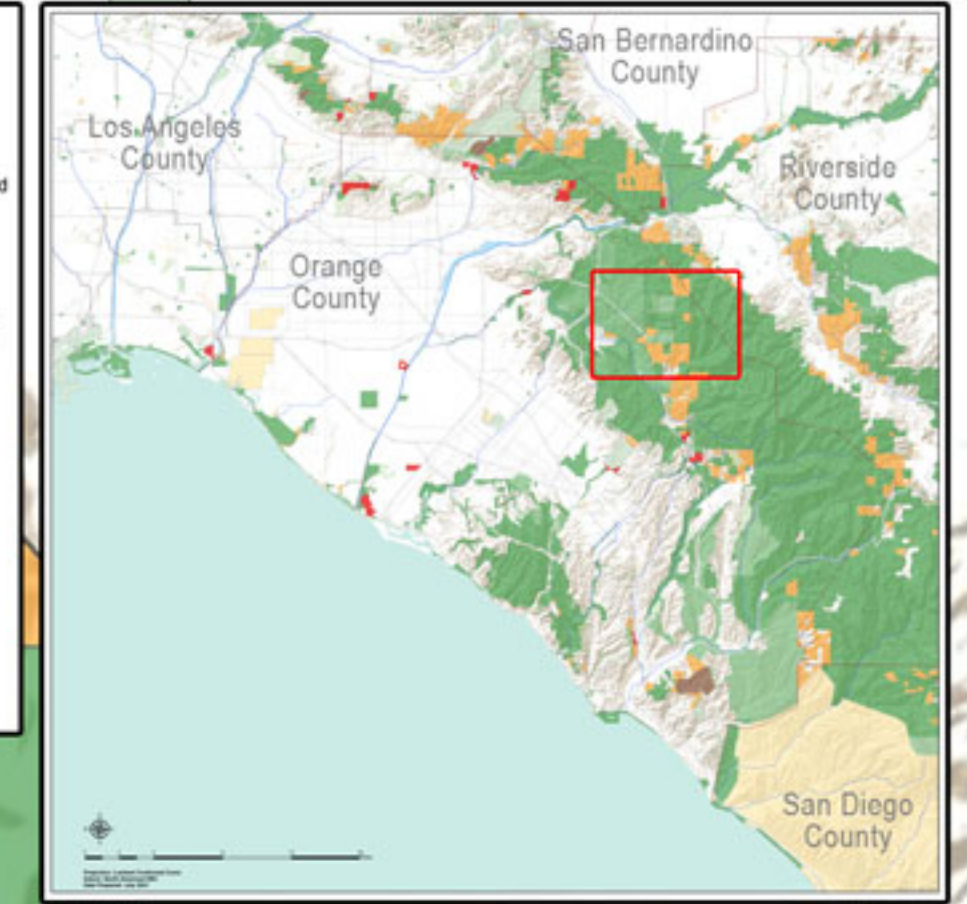
241

Irvine Ranch  
Open Space

Cleveland  
National Forest

### LEGEND

Acquisition Opportunities	
Active Conservation Project	Potential Conservation Land
Other Land Designations	
Public Conservation Land	Private Conservation Land
Public Not Protected	Easement / H.O.A. Land
Golf Course / Cemetery	Landfill
Military Land	Utility Land
Stream Corridor	Highway
County Boundary	



### PROPERTY LEGEND

#	Assessor's Number	Acreage
1	OC 085-080-15	15
2	OC 085-080-42 & 43 RC 275-110-012	585
3	OC 105-040-55	156
4	OC 105-040-11	33
5	OC 105-040-40	40
6	OC 105-371-01	34
7	OC 105-371-02	93
8	OC 105-371-05	77
9	OC 105-371-06	19
10	OC 105-361-09	98
11	OC 105-022-40	29
12	OC 105-020-70	129
13	OC 105-040-12	33
14	OC 105-051-77	16
15	OC 105-051-79	33
16	OC 105-051-81	19
17	OC 105-051-82	29
18	OC 105-051-02	160
19	OC 105-051-12	643
20	OC 105-051-72	240
21	OC 105-051-71	54
22	OC 105-051-69	64
23	OC 105-051-67	24

OC = Orange County, RC = Riverside County



0 1.9 Miles

Projection: Lambert Conformal Conic  
Datum: North American 1983  
Last Updated: July 2021





in partnership with



Limestone Canyon  
Wilderness Park

Cleveland  
National Forest

Whiting Ranch  
Wilderness Park

Lake  
Forest

Trabuco  
Canyon

O'Neill  
Regional Park

## LEGEND

Acquisition Opportunities	
<span style="color: red;">■</span> Active Conservation Project	<span style="color: orange;">■</span> Potential Conservation Land
Other Land Designations	
<span style="color: green;">■</span> Public Conservation Land	<span style="color: green;">■</span> Private Conservation Land
<span style="color: lightgreen;">■</span> Public Not Protected	<span style="color: green;">■</span> Easement / H.O.A. Land
<span style="color: yellow;">■</span> Golf Course / Cemetery	<span style="color: brown;">■</span> Landfill
<span style="color: orange;">■</span> Military Land	<span style="color: gray;">■</span> Utility Land
<span style="color: blue;">—</span> Stream Corridor	<span style="color: gray;">—</span> Highway
<span style="color: red;">—</span> County Boundary	



## PROPERTY LEGEND

#	Assessor's Number	Acreage	#	Assessor's Number	Acreage
1	OC 876-011-04	20	17	OC 105-201-42	20
2	OC 105-051-18, 867-011-07, 08, 11 & 18	257	18	OC 105-201-23	20
3	OC 876-011-10	17	19	OC 105-201-41	26
4	OC 876-011-12	20	20	OC 105-201-74	40
5	OC 105-051-17	40	21	OC 105-201-17	20
6	OC 876-011-17	20	22	OC 105-201-26	20
7	OC 876-011-20	20	23	OC 105-201-25	20
8	OC 876-011-15	20	24	OC 105-201-24	20
9	OC 876-021-18	159	25	OC 105-201-16	40
10	OC 105-201-97	36	26	OC 105-201-04	20
11	OC 876-021-04, 5, & 15	55	27	OC 105-201-72	38
12	OC 876-021-06	20	28	OC 105-201-73	82
13	OC 105-051-58	60	29	OC 105-202-67	20
14	OC 105-051-21, 33 & 57	80	30	OC 105-202-68	32
15	OC 105-051-20	20	31	OC 105-202-70	60
16	OC 105-201-06, 31 66 & 67	148	32	OC 867-071-04	37
			33	OC 867-021-08	34
			34	OC 858-011-10	56

OC = Orange County



241

1.9  
Miles

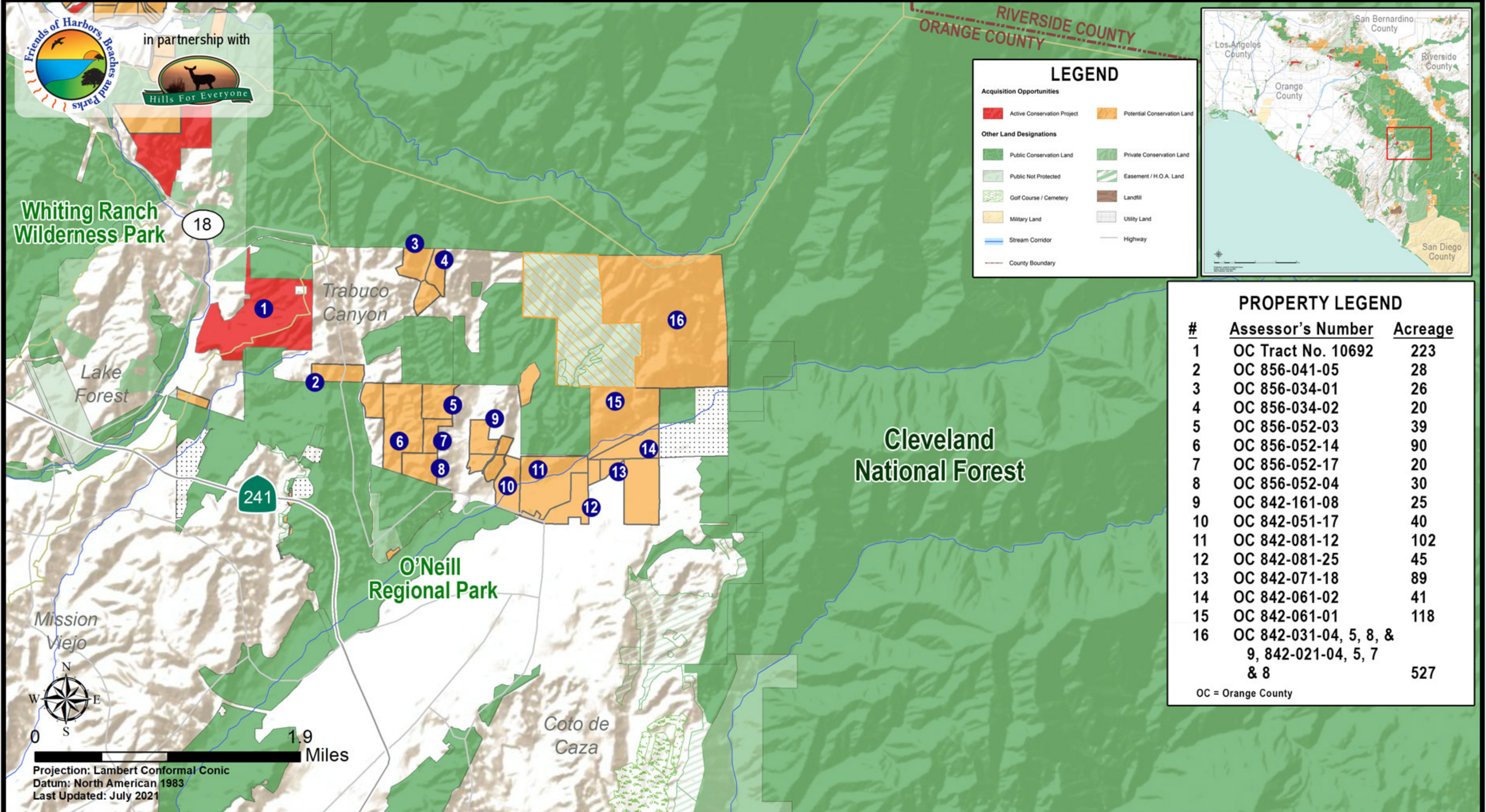
Projection: Lambert Conformal Conic  
Datum: North American 1983  
Last Updated: July 2021



# ORANGE COUNTY Green Vision Map

## Foothills (Central)

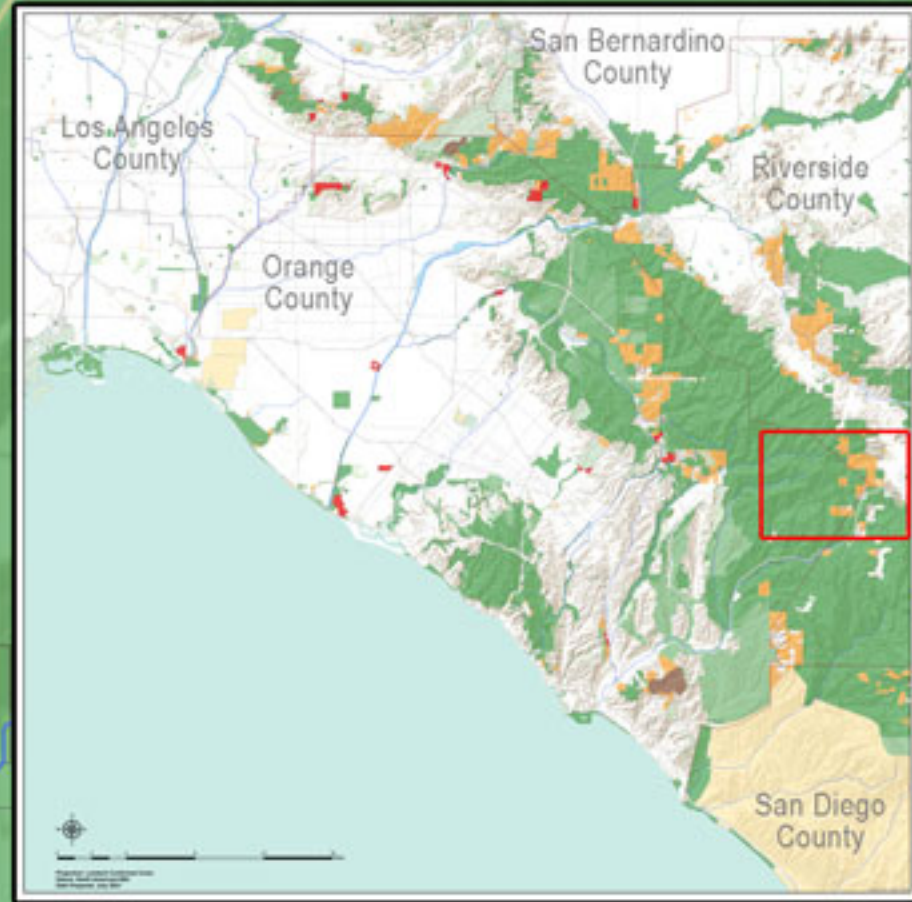
Map 15 of 18





# ORANGE COUNTY Green Vision Map

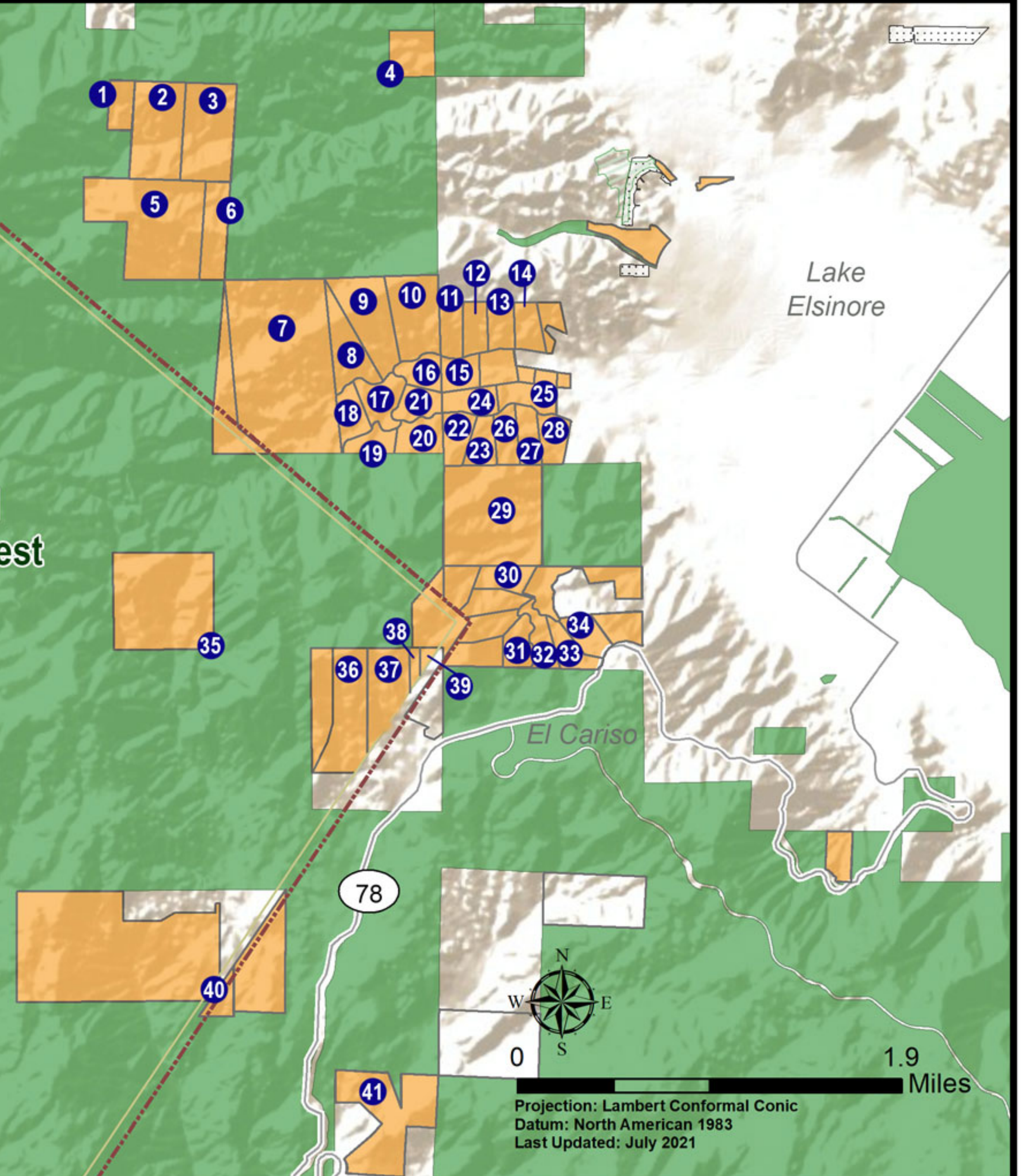
**Foothills (East)**  
Map 16 of 18



LEGEND			
<b>Acquisition Opportunities</b>			
	Active Conservation Project		Potential Conservation Land
<b>Other Land Designations</b>			
	Public Conservation Land		Private Conservation Land
	Public Not Protected		Easement / H.O.A. Land
	Golf Course / Cemetery		Landfill
	Military Land		Utility Land
	Stream Corridor		Highway
	County Boundary		

PROPERTY LEGEND					
#	Assessor's Number	Acreage	#	Assessor's Number	Acreage
1	RC 394-130-002	20	22	RC 387-280-006	22
2	RC 394-130-003	80	23	RC 387-280-007	20
3	RC 394-130-004	80	24	RC 387-280-005	22
4	RC 394-130-009	40	25	RC 387-280-017	28
5	RC 394-130-010	147	26	RC 387-280-008	20
6	RC 394-130-011	40	27	RC 387-280-009	20
7	RC 387-020-019	275	28	RC 387-280-010	20
8	RC 387-290-003	41	29	RC 387-020-008	156
9	RC 387-290-002	62	30	RC 387-260-002	21
10	RC 387-290-001	61	31	RC 387-260-007	21
11	RC 387-270-012	21	32	RC 387-260-014	21
12	RC 387-270-011	20	33	RC 387-260-019	20
13	RC 387-270-010	20	34	RC 387-260-018	18
14	RC 387-270-009	20	35	OC 125-120-34	158
15	RC 387-270-013	20	36	OC 125-120-37	194
16	RC 387-290-004	20	37	OC 125-120-04	56
17	RC 387-290-006	29	38	OC 125-120-27	28
18	RC 387-290-007	22	39	OC 125-120-30	25
19	RC 387-290-008	24	40	OC 125-120-41,	
20	RC 387-290-009	35		RC 385-030-001 &	
21	RC 387-290-005	21		RC 385-020-001	410
OC = Orange County, RC = Riverside County			41	RC 385-260-009	114

**Cleveland National Forest**



Projection: Lambert Conformal Conic  
Datum: North American 1983  
Last Updated: July 2021



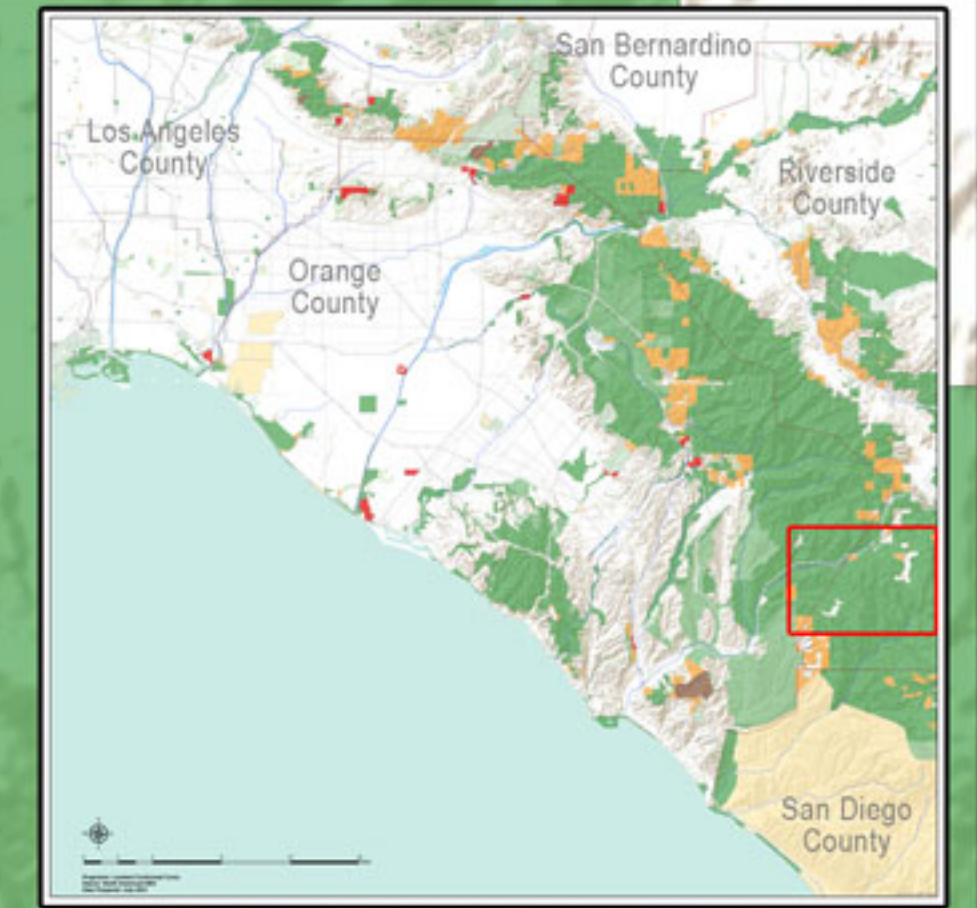
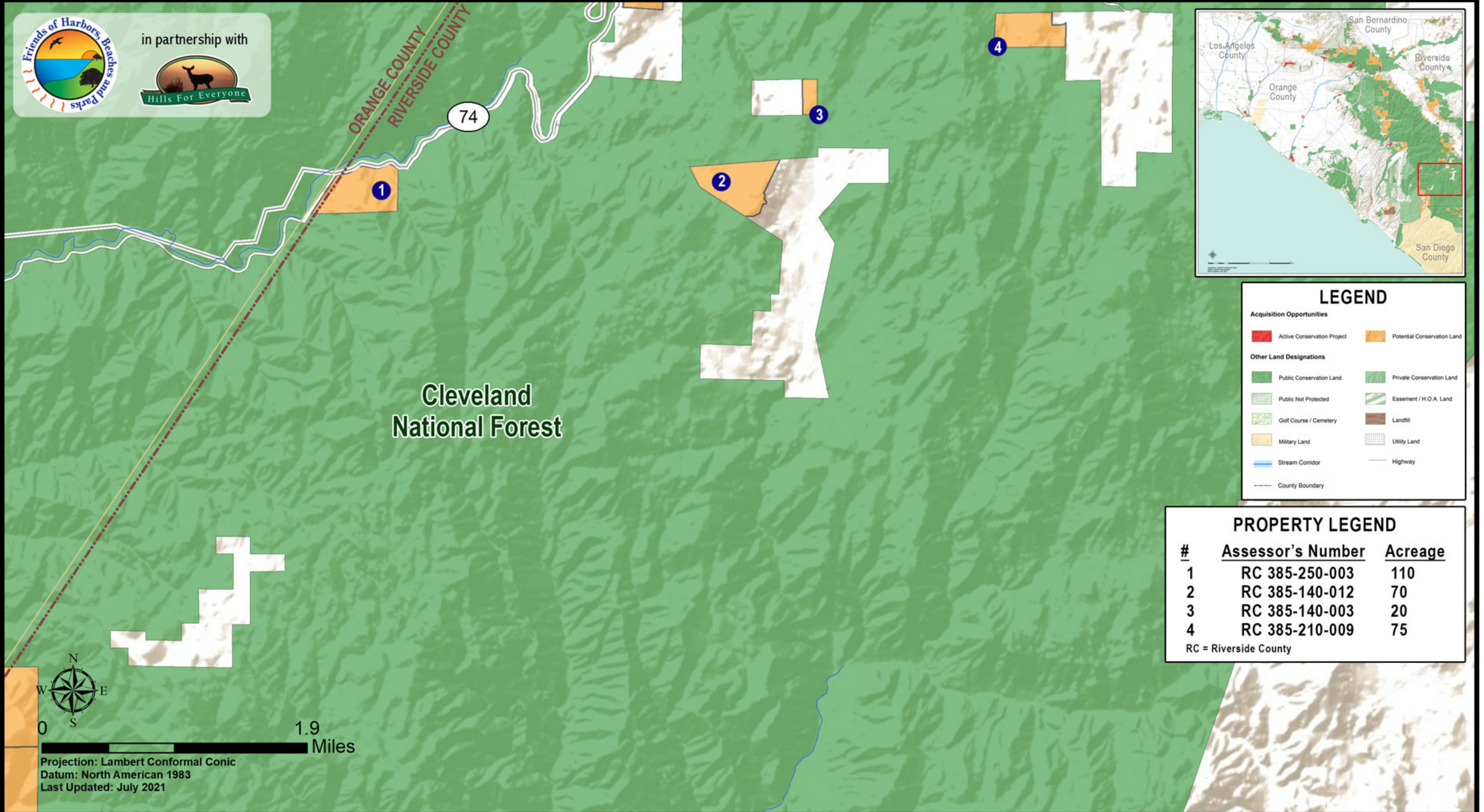
# ORANGE COUNTY Green Vision Map

## Foothills (Southeast)

Map 17 of 18



in partnership with



### LEGEND

#### Acquisition Opportunities

Active Conservation Project Potential Conservation Land

#### Other Land Designations

Public Conservation Land Private Conservation Land  
Public Not Protected Easement / H.O.A. Land  
Golf Course / Cemetery Landfill  
Military Land Utility Land  
Stream Corridor Highway  
County Boundary

### PROPERTY LEGEND

#	Assessor's Number	Acreage
1	RC 385-250-003	110
2	RC 385-140-012	70
3	RC 385-140-003	20
4	RC 385-210-009	75

RC = Riverside County



1.9  
Miles

Projection: Lambert Conformal Conic  
Datum: North American 1983  
Last Updated: July 2021



