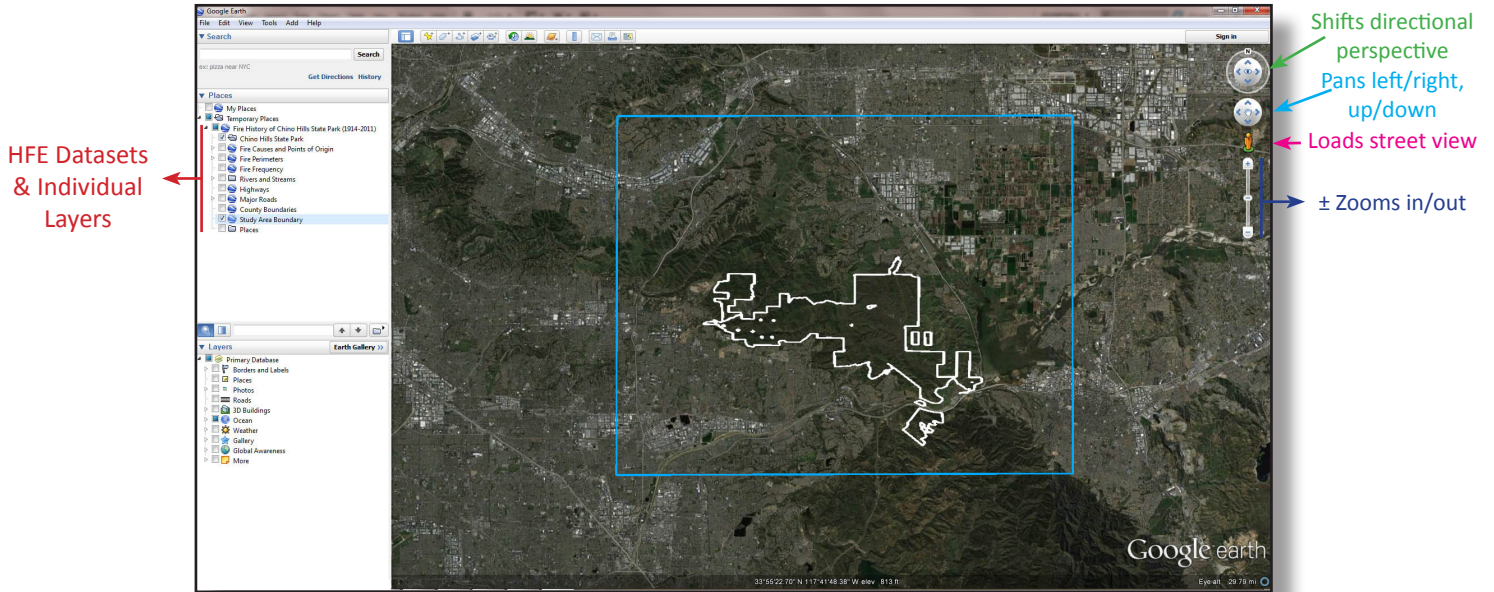




Google Earth: The Basics

This is a snapshot of the Google Earth interface and a few of the tools you may encounter or use while interacting with the Hills For Everyone datasets.



Turn layers on/off

- Click in the empty box next to the layer that you wish to turn on. The check mark indicates the layer is on.
- Click in the checked box next to the layer that you wish to turn off. The empty box indicates the layer is off.

Expand/Collapse Layers

- Items with an \triangleright or + indicate there are more options. Depending on the version of Google Earth you are using, you will either have an arrow (\triangleright) or a plus sign (+). Though both examples are listed below you will only see one or the other, not both.
- Click on the \triangleright or + to expand the options.
- Click on the \blacktriangleleft or – (minus sign) to collapse the options.